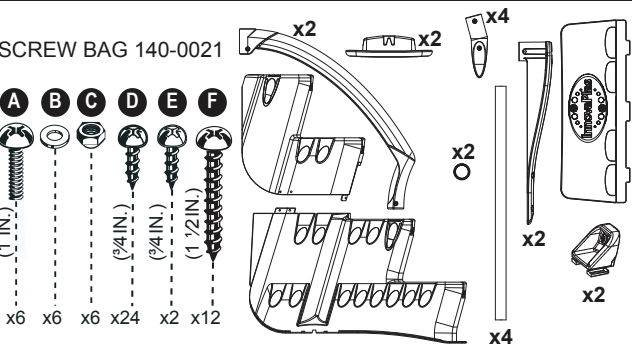
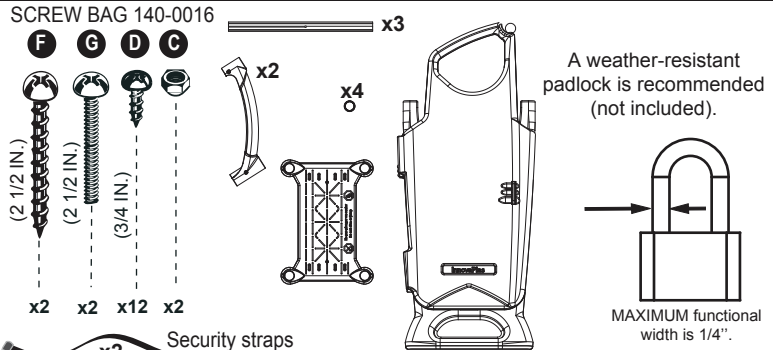


BILTMOR 5005 WITH SELF-LATCHING 9600

Contents of the Biltmor box SKU # 5005



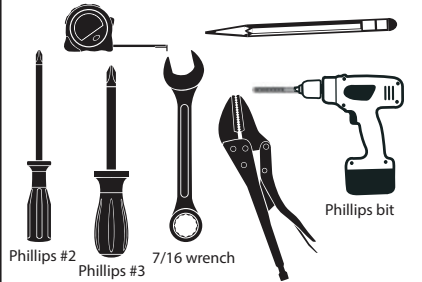
Contents of the Self-Latching box SKU # 9600



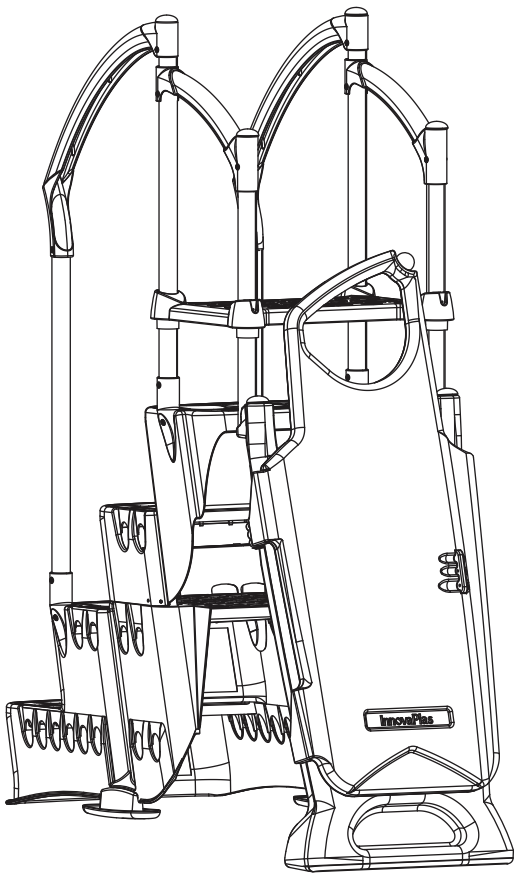
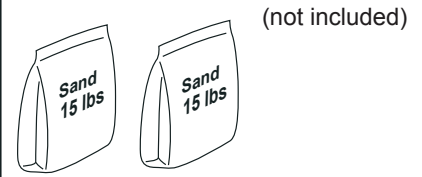
⚠ WARNING

- ▶ Install the step on a flat surface.
- ▶ Do not jump or dive from the step or ladder.
- ▶ Remove the step from water when temperatures drop below freezing.
- ▶ In winter, the step should be stored in an area protected from snow.
- ▶ Never lift the step by its handrails.
- ▶ Use BATTERY operated tools to avoid electric shock near water.
- ▶ Ensure no corrosive materials are added to the step or hardware kit.
- ▶ The step must be installed per manufacturer's instructions.
- ▶ File off all stripped or sharp edges before assembly to avoid injuries and liner damage.
- ▶ The manufacturer is not responsible for damages or injuries caused by improper installation or use of product.
- ▶ To ease the installation of handrails and bolts, use a screwdriver to line up the holes.
- ▶ **Maximum weight: 300 lbs / 136 kg.**

Required tools (not included)

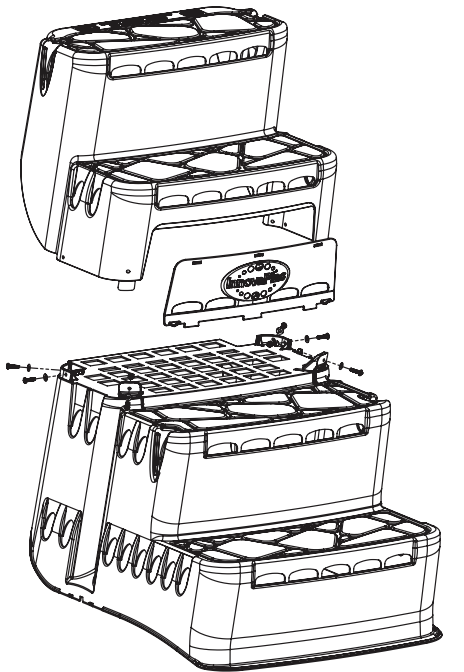
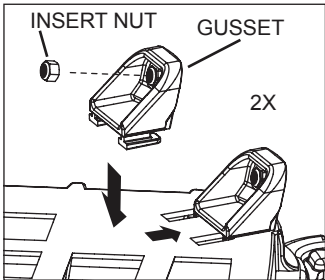
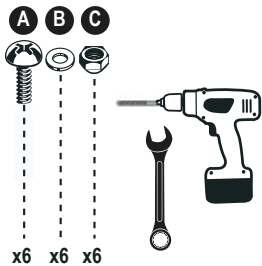


Sand



A

- 1) Insert the two gussets in the slots and slide them toward the corners.
- 2) Assemble the two main modules with the six screws, nuts and washers provided.
- 3) Snap the door between the top and bottom module within the slots provided.



2257 route 139
Drummondville, Québec
J2A 2G2

WWW.INNOVAPLAS.COM

MANUFACTURER WARRANTY

**1 year on step and closure.
1 year on hardware.**

REV. 02/17/2020

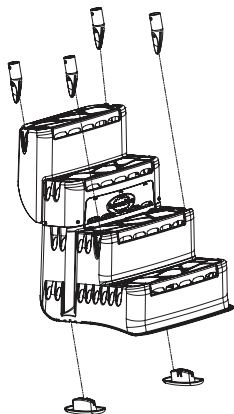
PN:

PG:1

BILTMOR 5005 WITH SELF-LATCHING 9600

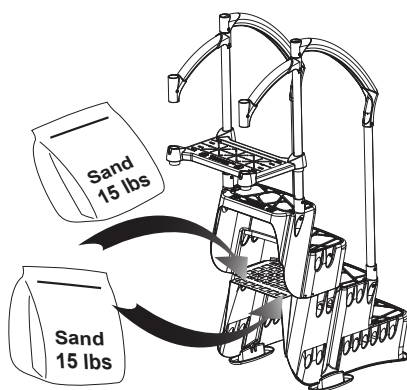
B

- 1) Snap the four post ends into the step, making sure that the cylindrical part is vertical and that the ends are snapped properly in their respective housings.
- 2) Snap the two feet to the bottom of the step.



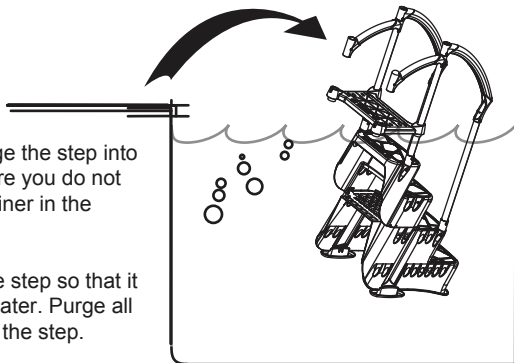
D

- 1) Insert 2 15 lbs (7 kg) sand bags on either side of the third step, as shown.



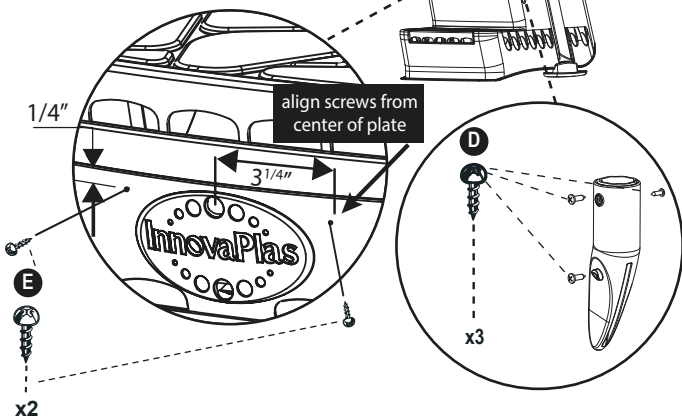
E

- 1) Slowly submerge the step into the pool. Make sure you do not damage the pool liner in the process.
- 2) Angle the whole step so that it is entirely under water. Purge all the air from under the step.



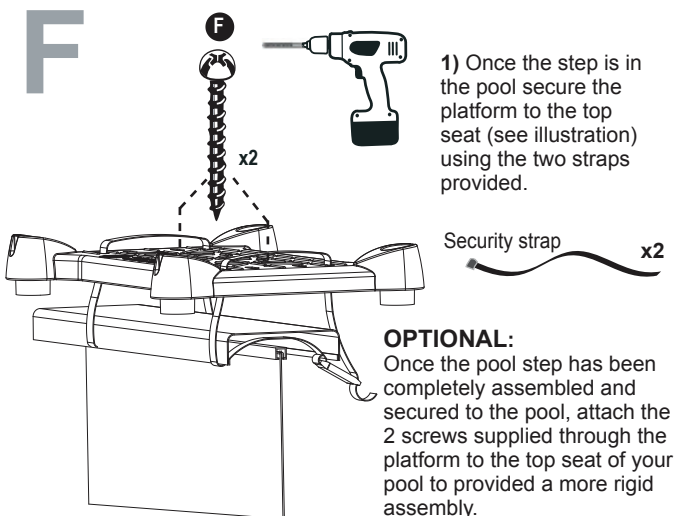
C

- 1) Insert the four posts into the post ends and secure them in place with the screws provided (see medallion).
- 2) Insert the platform over the 2 rear posts.
- 3) Insert the small and large handrails as illustrated. Secure the large handrails with the screws provided. Leave the small handrails floating.
- 4) Fasten the access panel with the screws provided.



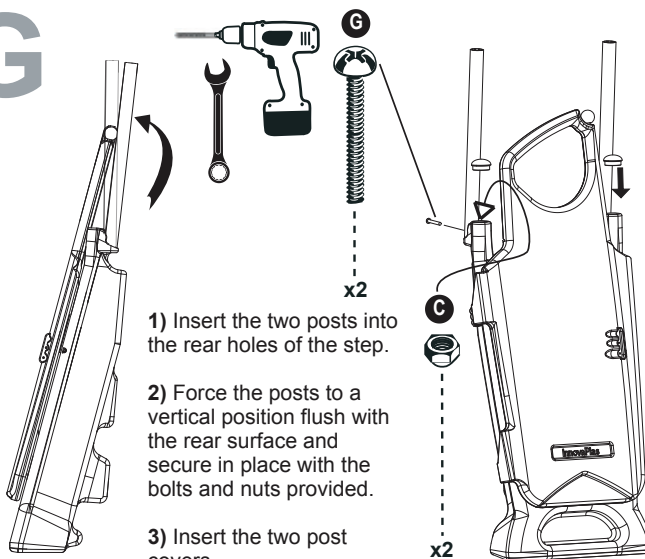
F

- 1) Once the step is in the pool secure the platform to the top seat (see illustration) using the two straps provided.
- OPTIONAL:**
Once the pool step has been completely assembled and secured to the pool, attach the 2 screws supplied through the platform to the top seat of your pool to provided a more rigid assembly.



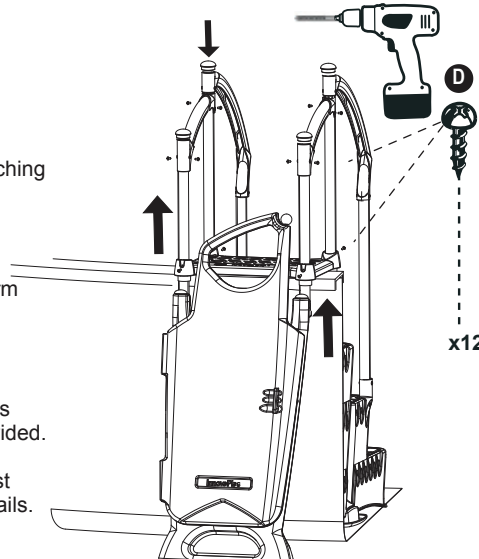
G

- 1) Insert the two posts into the rear holes of the step.
- 2) Force the posts to a vertical position flush with the rear surface and secure in place with the bolts and nuts provided.
- 3) Insert the two post covers.



H

- 1) Slide the Self-Latching posts through the platform and small handrails.
- 2) Secure the platform using the screws provided.
- 3) Secure the small handrails to the posts with the screws provided.
- 4) Insert the four post covers on the handrails.



MANUFACTURER WARRANTY

**1 year on step and closure.
1 year on hardware.**



2257 route 139
Drummondville, Québec
J2A 2G2

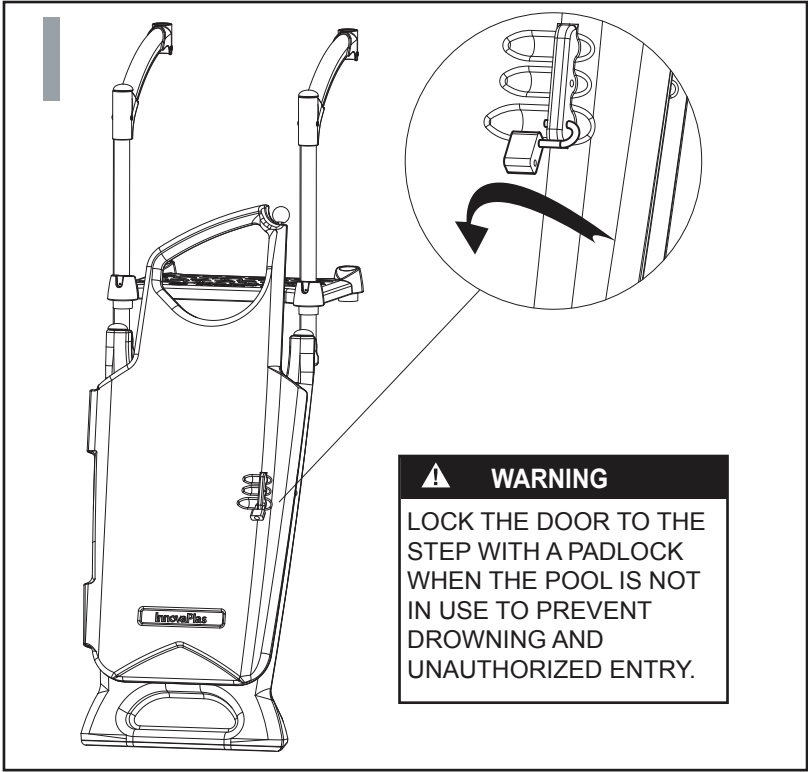
WWW.INNOVAPLAS.COM

REV. 02/17/2020

PN:

PG:2

BILTMOR 5005 WITH SELF-LATCHING 9600



2257 route 139
Drummondville, Québec
J2A 2G2

WWW.INNOVAPLAS.COM

MANUFACTURER WARRANTY

1 year on step and closure.
1 year on hardware.

REV. 02/17/2020

PN:

PG:3